



RILEY COUNTY 4-H NEWSLETTER

September 2024

Join us for the County 4-H Achievement Celebration

Join us for the County 4-H Achievement Celebration on **Sunday, October 27** at Pottorf Hall in Cico Park starting at 5 pm. Parents, guardians, 4-Hers, and siblings are welcome! Enjoy a catered meal brought to you by The Farmhouse, followed by a short award presentation starting at 5:30 pm. Please **RSVP by October 13** using the link below.

Attendance Registration Link

<https://docs.google.com/forms/d/e/1FAIpQLSc6DsgTxBe-IJj97A-zXo7Hi3olwrce9y56xEUlp-U9yjXggg/viewform>

2024-2025 4-H Enrollment and Re-Enrollment

Enrollment and re-enrollment will open on **October 1** and will be done via [4-H Online](#). If you have forgotten your password, 4-H Online can set you up with a temporary one. If you have forgotten your email log-in, PLEASE do not create a second account. Instead, contact Brandy brandymarie@ksu.edu or call 785-537-6350 and she can assist you. The deadline to enroll and change projects will be May 1.

4-H Council Officer Applications

If you wish to be a 4-H Council Officer, applications are due **Friday, November 1**. For details on 4-H Council Officer responsibilities and for an application, please visit <https://www.riley.k-state.edu/4-h/forms-resources/council/index.html> You will have to download the application for it to be form fillable.

Trips and Awards Nominations

Nominations for new 2024-2025 Trips and Award Committee members are due on **Friday, November 1**.

Qualifications: Any adult (leader, parents' advisory committee member, or parent) with three years exposure to the 4-H program.

Applications can be accessed online: <https://www.riley.k-state.edu/4-h/forms-resources/awards/index.html>

How to Reach Us:

Riley County Extension
110 Courthouse Plaza, RM B220
Manhattan, KS 66502
785-537-6350

John: jajobe@ksu.edu
Brandy: brandymarie@ksu.edu
4-H Info: 4hinfo@rileycountyks.gov
Office Hours: Monday-Friday; 8-5 pm

Inside this issue:

Local Updates	1-4
Leaders/ Parents	5
Ambassadors	6
CWF Garage Sale	7
4-H Info Meeting	8
Setting 4-H Goals	9
Photo Challenge	10
Entomology	11
Calendar	12

The Riley County Extension Office will be closed **Monday, October 14** in observance of Columbus Day

If you have something for the 4-H newsletter, please submit it to jajobe@ksu.edu by the *10 of the month*.

4-H Council Dates for 2023-2024

Monday, November 4, 2024; Monday, January 6, 2025; Monday, March 3, 2025; Monday, May 5, 2025; Monday, June 30, 2025; Monday, August 25, 2025 (labor Day is September 1)

Each club is allowed to have 5 voting representatives: 3 youth and 2 adults.

Importance of attending 4-H Council

Our Riley County 4-H Council serves as a vital component to our month-to-month programming here in our area, but also allows club representative to take vital information back and report to their club. 4-H Council plans and implements county-wide events, oversees funding request, and votes to make necessary changes to our program as they see fit. Each club is allowed to have (5) voting representatives (3) youth and (2) adults. I would strongly encourage you to exercise that right throughout the year. You don't have to be a Council Representative to attend. It is open to all 4-Hers and parents. The 4-H Council dates are **ABOVE**.

4-H Showcase Event 2025

Our 4-H Showcase event date will be February 22, 2025. Once again we will be at Riley County Grade school, with events beginning at 8:30 am and we should be done by 3:00 pm. As part of the event we will have photography, horticulture, and FACs judging. Breakfast and lunch items will be served throughout the day. Registration will open to 4-Hers in December so check back in with us. Start the planning process now for the February event. See you there!

Shining Star Volunteer Award

I would encourage 4-H clubs, individual's 4-H families, or 4-H volunteers to nominate an outstanding volunteer in your club as a "Shining Star". Depending on the number of submissions, one or two individuals will be selected and acknowledged at the **October 27**. Achievement Celebration. Shining Star award nomination forms can be found online at www.riley.k-state.edu/4-h/forms-resources/awards/index.html or picked up at the Extension office. All nominations are due on **September 27**.

Club Seal, Pin, Key and Project Reports (formally KAPs)

Project Report Forms, due by noon on **Friday, September 27**, you can only have (1) report per book and must feature; Personal Page, 4-H Story, and Project Report Form, including pictures. These items need to be placed in a folder or report cover. Junior 7-9, Intermediate 10-13, and Senior 14-18 (4-H Age as of January 1, 2024). **Cover labels need to include the members name and state whether this is a Junior, Intermediate, or Senior project and the project name.** Other awards due on **Friday, September 27** include: Club Seal Applications, Pin Applications (**DO NOT use state forms**), I-Dare-You Applications, Key Awards (*follow state guidelines*), Family of the Year Applications, and 4-H Shining Star Award Applications. Visit <http://www.riley.k-state.edu/4-h/forms-resources/awards/index.html>. Additionally, forms may be picked up from the Extension office.

Nominate a Family of the Year

Do you know of a Riley County 4-H family that has gone above and beyond this past year? Nominate them for the 2023-2024 'Family of the Year Award'. This family will be acknowledge at the 2024 Riley County Achievement Celebration on October 27. Applications can be found at <https://www.riley.k-state.edu/4-h/forms-resources/awards/2019%204-H%20Family%20of%20the%20Year%20Award.pdf> Applications are due at the Extension office on September 27.

Nominate a 4-H Alumni of the Year

Do you know of a former Riley County 4-Her that should be acknowledged for giving back to our local program? Consider nominating them for the annual '4-H Alumni of the Year' award. The winner will be celebrated and acknowledged at this years achievement celebration. Applications can be found at <https://www.riley.k-state.edu/4-h/forms-resources/awards/index.html>. Applications are due at the Extension office on September 27.

2024 Riley County Foundation Grants

Are you a Riley County 4-H youth development group seeking support funds? Consider filling out a Riley County 4-H Foundation funding request application. Application must be returned to the Riley County Extension office, 110 Courthouse Plaza, Rm B220 by **5:00 pm on November 22**. Recipients will be notified after the first of the year as to the status of their request.

Applications can be found online at <http://a.cms.omniupdate.com/10/#k-state/k-state/ksre-riley/preview/4-hfoundation/index.pcf>

If your group received a grant at the beginning of 2023 you will need to fill out a grant follow-up report <http://a.cms.omniupdate.com/10/#k-state/k-state/ksre-riley/preview/4-hfoundation/index.pcf>

Riley County 4-H Sewing Group 2024-2025

Interested in learning how to sew or wanting to take your current sewing skills to the next level? Join us as we kick-start this year's Riley County 4-H Sewing group. Our first class will be **Monday, September 23**. After our first class, this group will gather each month on the **4th Monday** at Pottorf Hall in Cico Park. Sessions will run from **6-8 pm from Oct. to June**. There will be a few date changes due to holidays. Those will come out at a later date once registered. The cost to participate is \$15 in addition to monthly supply needs (fabric, zippers, etc.).

We are looking for youth that are either beginners or consider themselves intermediate-skilled sewers. The club is open to all youth, but anyone 9 and younger will need to be accompanied by a parent or guardian. New sewers 10 years and above, must also have an adult. Limited to 15 participants. If you are unable to attend after the first few meetings, please let us know! There will be a wait list, and someone can take your spot.

\$15 payments should be made to 'Riley County 4-H' at the Riley County Extension Office, 110 Courthouse Plaza, Rm B220 **before September 20!** You may also pay during registration via PayPal.

If you have questions, please contact Sheryl Fjell at sherylfjell@gmail.com

Registration Link:

<https://lp.constantcontactpages.com/ev/reg/px7za2a/lp/f750b8bb-eb96-4e13-9ec6-d880c53dc56a>

I pledge my **H** **AD** to clearer thinking,
my **HE** **RT** to greater loyalty,
my **H** **NDS** to larger service,
and my **HE** **ALTH** to better living,
for my club, my community, my country
and my world. 

Kick off the 4-H Year with Service

We hope every Extension Unit will join us this fall in seeing just how much we can give back to our communities! The weekend at the end of National 4-H Week is the perfect opportunity to set up a service project. Invite your friends, clubs, adult volunteers, and 4-H Alums too! Consider inviting some local organizations or businesses to work with your group.

When: October 12-13, 2024

Who: 4-H Members, 4-H Clubs, Friends, Adult Volunteers, Parents, 4-H Alumni

It's time to make plans for your club to participate. Register your project here: www.Kansas4H.org/484H We would appreciate having projects registered by September 20.

The Kansas Youth Leadership Council will recognize some of the clubs/ projects who report on their projects online by October 20.

National 4-H Conference and Youth 4-H Youth Leadership Council Applications

The Youth Council Application and National 4-H Conference Application will be combined again this year, with applicants indicating if they are applying for one or both opportunities.

Any Kansas 4-H member between the ages of 14 and 18 before January 1, 2025, may apply as a Council Rep, and those 15-18 before January 1, 2025, may apply for National Conference.

This year's KYLF delegation will elect representatives from the four extension program areas (NE, NW, SE, SW) for one-year terms on the council. Up to 6 National Conference Delegates will be selected through an interview prior to KYLF and they serve a two-year term on council.

Application information for the State 4-H Youth Leadership Council and National 4-H Conference is on the web and the deadline to apply is October 1, 2024.

2024 Kansas 4-H Leadership Weekend

The Kansas 4-H Leadership Weekend will be November 23-24 at Rock Springs 4-H Ranch and consists of the Kansas Youth Leadership Forum and the Kansas Volunteer Leader Forum.

KYLF is for youth ages 14-18 before January 1, 2025 and KVF is for all Kansas 4-H Volunteers. KYLF will feature leadership workshops, Youth Council Elections, and opportunities to learn and have fun. The Kansas 4-H Volunteer Leader Forum will feature workshops and information to help volunteers be more effective and learn from each other. This Forum for adults is organized by the Kansas Association of 4-H Volunteers.

Registration will open in September. Again, this year participants in both forums will register through the same system. Registration deadline is October 15, 2024 for both events. There will also be an option for coming in Friday evening and having breakfast Saturday morning for those coming from a distance.

Leaders and Parents

September Checklist

- Check club mailbox at the Extension Office
- Highlight key points/deadlines from the 4-H newsletter & calendar at club meeting
- Elect Club Officers and 4-H Council Representatives
- Send list of new officers, club leaders, and project leaders to the Extension Office.
- Announce to club parents that you are recruiting project leaders and other volunteers (Parent Advisory Committee, New Family Coordinator, etc.).
- Report on August 4-H Council Meeting.
- National 4-H Week is **October 6-12** - Promotion ideas/Implement plan within community/school
- Encourage members to fill out Achievement Pin applications, Project Report Forms (formerly KAP), Key Awards, I Dare You, etc. They are due to the Extension Office **Sept 27**. (Check with your club leader for your club deadline)
- Work with Club Officers/Parents to make club handbook with member/leader contact info, monthly meeting information (date/time/project talks/demonstrations). A copy should be given to each family.
- Make plans to attend 4-H Achievement Celebration (**October 27, 5 pm** ; Pottorf Hall, meal provided)

Project Report Form Screening

Volunteers are needed to screen Project Report Form (formerly KAP) from Pottawatomie County this year. Screenings will take place at the Riley County Extension office, **Wednesday, October 2 and Thursday, October 3**, starting at 9:00 am both days. **Each club is required to provide at least two screeners.**

No previous experience is necessary! We can walk you through the screening process and answer any questions you may have!

Screeners can come and go from 9:00 am to 6:00 pm on Wednesday and 9:00 am to whenever we're finished on Thursday.

Email John or Brandy with your screeners by September 27 jaiboe@ksu.edu or bbruna@rileycountyks.gov
Please consider this opportunity!

Annual 4-H Officers Training 2023

Join us on **November 14 from 6:30-8:00 pm** at Pottorf Hall in Cico park for our annual officers training meeting. Both junior and senior officers are encouraged to join the fun for that evening. We will have a general session, then break out into training groups for President, Vice President, Secretary, Parliamentarian, Treasurer, Reporter, Rec. Leader, and Song Leader. We hope to see you there!

K-STATE
Research and Extension



[Join the Riley County 4-H Ambassador Team](#)

Riley County 4-H Ambassador Job Description

Purpose:

Riley County 4-H Ambassadors promote 4-H and Extension youth programs and participation in Riley County, through the use of activities, presentations, personal connections, and media.

Responsibilities:

Promote 4-H programs and opportunities by:

Working as a team with Ambassadors, Advisors and 4-H staff

Attending scheduled meetings and activities

Connecting with younger 4-H members to inspire them to greater involvement

Delivering presentations and programs promoting 4-H to community groups

Creating content for radio, print, and social media regarding 4-H promotion

Serving as an Ambassador for two-year term

Attending annual State Ambassador Training workshop

Recruiting other teens to serve in the 4-H Ambassador role



Skills Needed:

Positive attitude

Willingness to engage with youth and adults in individual conversation and public speaking venues

Enthusiasm for the 4-H program

Experience/knowledge of 4-H programs in Riley County and beyond

Growing communication skills and ability to work well with diverse groups of people

Ability to manage personal schedules, responsibilities, and commitments

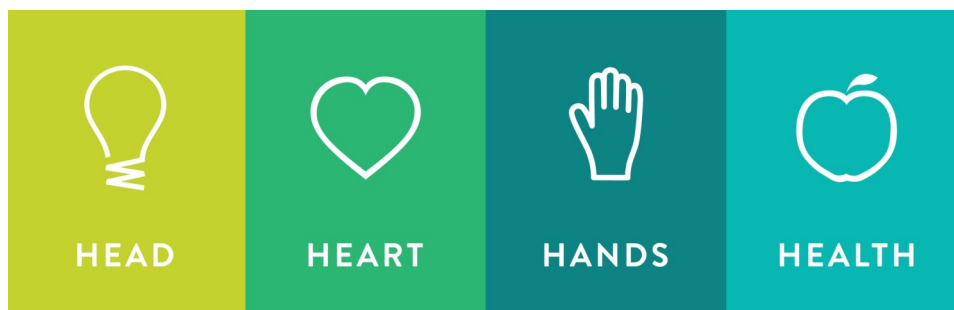
Time Required:

A Riley County 4-H Ambassador position is a two-year term commitment to help maintain and pass along knowledge and experience in the program.

This position, on average, requires 1-2 hours per month with additional time needed for specific activities and events.

Application Link:

<https://www.riley.k-state.edu/4-h/forms-resources/ambassadors/index.html>





4-H Garage Sale

October 18-19

Wreath Barn, Cico Park, Manhattan

We are looking for a huge selection of items
to be donated.

We do not accept TVs of any kind.

Proceeds benefit 4-H members in Pottawatomie, Riley,
& Wabaunsee Counties

Drop Off Items on Location

Wednesday, October 16, 5-8 PM

Thursday, October 17, 10 AM - 8 PM

Garage Sale

Friday, October 18, 9 AM - 8 PM

Saturday, October 19, 9 AM - Noon

Questions: Call John Jobe, 785-537-6350

K-STATE
Research and Extension



K-State Research and Extension is committed to providing equal opportunity for participation in all programs, services and activities. Program information may be available in languages other than English. Reasonable accommodations for persons with disabilities, including alternative means for communication (e.g., Braille, large print, audio tape, and American Sign Language) may be requested by contacting the event contact, John Jobe, two weeks prior to the start of the event. Requests received after this date will be honored when it is feasible to do so. Language access services, such as interpretation or translation of vital information will be provided free of charge to limited English proficient individuals upon request.

Kansas State University Agricultural Experiment Station and Cooperative Extension Service

K-State Research and Extension is an equal opportunity provider and employer.

Riley County 4-H Informational Meeting

Interested in 4-H? Come learn about the amazing opportunities 4-H has to offer our Riley County Youth! We engage young people ages 5-18 in high quality experiential learning, as well as assist in developing the skills needed to become the leaders of tomorrow.

When: Monday, September 23rd @ 6:30 pm

Where: Pottorf Hall in Cico Park, 1710 Avery Ave, Manhattan, KS 66503

Topics Covered: Community Club Engagement, Enrollment, Annual 4-H Schedule, Project Participation, Family Involvement, and the 4-H Fair Experience.



K-STATE
Research and Extension



Riley
County



Setting 4-H Project Goals

Name: _____ Club: _____ Year: _____

Now that you have selected your 4-H projects for the year, it is important to plan out what you would like to learn and accomplish. What new skills would you like to gain? Who is going to help you along the way? Setting measurable goals will help guide you through positive 4-H project learning experiences.

WHAT IS A GOAL?

A GOAL is . . . Deciding what you want do and learn in a 4-H project.
A road map. It helps you get where you want to go.

Your goals should have three parts that will allow you to measure and check your progress. The three parts of a good goal, include:

1. **ACTION** — How are you going to do something.
2. **RESULT** — What are you going to do. Be specific!
3. **TIMETABLE** — When are you going to do it.

This worksheet is designed to help you set your 4-H project goals. Below are some examples of well-written goals:

Action	Result	Timetable	Who Will Help Me
I want to learn	about my bucket calf's nutritional needs	before county weigh-in.	Dad
I want to make	three nutritious snacks for the nursing home residents	by our June club meeting.	my project leader
I want to learn	about the aerodynamics of my rocket	before the spring launch.	Mom
I want to lead	a horse project meeting	by February.	my extension agent
I want to keep	accurate records of my photography project experiences and expenses	monthly.	my project leader & parents

CONTROL TEST: Do your goals pass the control test? Do you have control over all parts of what happens? If you can answer "yes," then you are ready to begin record keeping. For example, "I want to win grand champion with my cookies at the county fair," does not pass the control test. A 4-H member doesn't have control over ribbon placing.

Now it is your turn. Practice writing three goals that you would like to accomplish this 4-H year. If you need help, ask an adult to assist.

Action	Result	Timetable	Who Will Help Me
I want to . . .			
I want to . . .			
I want to . . .			

Time to begin. In the spaces provided on the next page, set your goals for each project you are enrolled in this year. Attach additional pages as necessary.

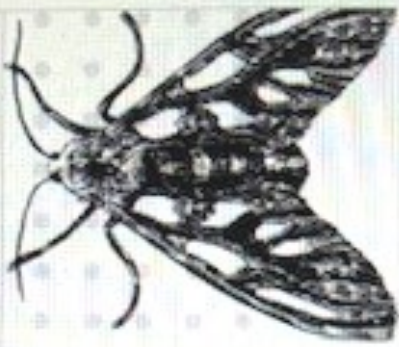
Please keep in mind that younger 4-H members will have fewer, less complex goals than older, more advanced 4-H members. A good rule of thumb is three to five goals per project for ages 7 to 10, four to eight goals per project for ages 11 to 13, and seven to 12 goals per project for ages 14 to 18.



Open to all current and past 4-Hers no matter where you are/were a member.

Before September 29, send a photo to jajobe@ksu.edu that highlights a moment from your time in 4-H (group pictures, project photos, 4-H memories). Please caption your photo with (first name and last initial), year, and description. October 1-7, we will post photos to our Riley County Extension Facebook page.

4-H Photo Challenge to Celebrate National 4-H Week



Entomology



Project

Sunday, Sept. 8, 5:45–7pm – meet at Mt. Mitchell (outside Wamego) for insect collection/exploration

Saturday, Oct. 12, 1 pm – visit K-State Insect Museum (\$3 per person)

Sunday, Nov. 10 – 6:30–7:30pm – Pinning and Identification at Green Valley Community Center



You do not have to be enrolled in entomology to attend these events!!



Interested? Contact Camilla at cjroberts@ksu.edu

2024-2025 Riley County 4-H Calendar

October

- 1 4-H Year Begins
- 1 Online 4-H Enrollment Opens
- 2-3 Project Report Form (PRF) Screening
- 6-12 National 4-H Week
- 19-20 State Dog Conference
- 27 Achievement Celebration, Pottorf

November

- 1 Trips/ Awards Nominations DUE
- 1 4-H Council Officer Applications DUE
- 4 4-H Council Meeting, 7 pm Pottorf Hall
- 14 Veteran's Day, Extension Office Closed
- 18-19 CWF Garage Sale/ Cico Park
- 23-24 KYLF
- 28-29 Thanksgiving Holiday, Ext Office Closed
- TBA Officers Training, Pottorf Hall
- TBA Riley County 4-H Grant Proposals DUE

December

- 24 Half Day, Extension office
- 25 Christmas Holiday, Office Closed

January

- 1 NYE Holiday, Ext. Office Closed
- 6 4-H Council, 7 pm Pottorf Hall
- 20 MLK Jr. Day, Extension Office Closed
- TBA NE Area PRF Screening, Pottorf Hall
- TBA Horse Panorama, Rock Springs
- TBA 4-H Showcase Pre-Entry DUE
- TBA State and Local Scholarships DUE

February

- 17 Presidents Day, Extension Office Closed
- TBA Beef Weigh-In; Fairgrounds 1-3 pm
- TBA State Horse Judging
- TBA 4-H Ambassador Training, Rock Springs
- TBA Riley County Showcase, RCGS
- TBA Citizenship in Action, Topeka

March

- 1 State 4-H Scholarship and State PRFs DUE
- 1 Red Wheel Sales Begin
- 3 4-H Council, 7 pm Pottorf Hall
- Late March Red Wheel Sales DUE
- TBA YQCA, 6-8 pm, Clover Room

April

- 19 Red Wheel Pick-Up, Pottorf Hall 9-9:30 am
- TBA State Shooting Sports Match
- TBA Discovery Days Registration DUE
- TBA Fair Royalty Applications DUE

May

- 1 Project Add/ Drop Deadline
- 5 Sheep & Goat Weigh-In/ Tagging, Hulbert Arena, 5-7 pm
- 5 4-H Council, 7 pm Pottorf Hall
- TBA Dog Agility Workshop
- TBA Discovery Days, KSU Campus
- TBA Fair Royalty Interview; Pottorf Hall
- TBA Emerald Circle Banquet

June

- 1 Horse ID Papers DUE
- 7 Dog Show (Disciplines TBA)
- 28 Dog Show (Disciplines TBA)
- 30 4-H Council, 7 pm Pottorf Hall
- TBA State Geology Field Trip

July

- 1 4-H Council, 7pm Pottorf Hall
- 1 Fair Pre-Entries DUE
- 4 Independence Day, Ext Off. Closed
- 15 State Fair Livestock Entries DUE
- 17 Fair Fashion Review
- 19 4-H Horse Show
- 21 Fair Work Night, Pottorf Hall
- 22 4-H Photography Judging
- 22 4-H and Cloverbud Pet Show
- 23 4-H Visual Arts Judging
- 23 4-H and Cloverbud Foods Judging
- 24-28 Riley County Fair, Cico Park
- 29 Fairground Cleanup

August

- 1 State Fair Entry Forms DUE
- 15 KJLS Entries DUE
- 25 4-H Council, 7 pm Pottorf Hall
- TBA State Horticulture & Livestock Judging

September

- 1 Labor Day, Extension Office Closed
- 4 State Fair Project DUE to Extension Office
- 5-14 Kansas State Fair
- 19 Project Report Forms & Awards DUE

Updated 8/31/2024