



# RILEY COUNTY 4-H NEWSLETTER

## October 2024

### Join us for the County 4-H Achievement Celebration

Join us for the County 4-H Achievement Celebration on **Sunday, October 27** at Pottorf Hall in Cico Park starting at 5 pm. Parents, guardians, 4-Hers, and siblings are welcome! Enjoy a catered meal brought to you by The Farmhouse, followed by a short award presentation starting at 5:30 pm. Please **RSVP by October 13** using the link below.

#### **Attendance Registration Link**

<https://docs.google.com/forms/d/e/1FAIpQLSc6DsgTxBe-IJj97A-zXo7Hi3olwrce9y56xEUlp-U9yjXggg/viewform>

### 2024-2025 4-H Enrollment and Re-Enrollment

Enrollment and re-enrollment will open on **October 1** and will be done via [4-H Online](#). If you have forgotten your password, 4-H Online can set you up with a temporary one. If you have forgotten your email log-in, PLEASE do not create a second account. Instead, contact Brandy [brandymarie@ksu.edu](mailto:brandymarie@ksu.edu) or call 785-537-6350 and she can assist you. The deadline to enroll and change projects will be May 1.

### 4-H Council Officer Applications

If you wish to be a 4-H Council Officer, applications are due **Friday, November 1**. For details on 4-H Council Officer responsibilities and for an application, please visit <https://www.riley.k-state.edu/4-h/forms-resources/council/index.html> You will have to download the application for it to be form fillable.

### Trips and Awards Nominations

Nominations for new 2024-2025 Trips and Award Committee members are due on **Friday, November 1**.

**Qualifications:** Any adult (leader, parents' advisory committee member, or parent) with three years exposure to the 4-H program.

**Applications can be accessed online:** <https://www.riley.k-state.edu/4-h/forms-resources/awards/index.html>

#### **How to Reach Us:**

Riley County Extension  
110 Courthouse Plaza, RM B220  
Manhattan, KS 66502  
785-537-6350

John: [jajobe@ksu.edu](mailto:jajobe@ksu.edu)  
Brandy: [brandymarie@ksu.edu](mailto:brandymarie@ksu.edu)  
4-H Info: [4hinfo@rileycountyks.gov](mailto:4hinfo@rileycountyks.gov)  
Office Hours: Monday-Thursday; 7:30 am -5 pm  
Friday 7:30 am - noon

#### **Inside this issue:**

|                   |     |
|-------------------|-----|
| Local Updates     | 1-2 |
| Leaders/ Parents  | 3   |
| CWF Garage Sale   | 4   |
| Setting 4-H Goals | 5   |
| Entomology        | 6   |
| Calendar          | 7   |

The Riley County Extension Office will be closed **Monday, October 14** in observance of Columbus Day

If you have something for the 4-H newsletter, please submit it to [jajobe@ksu.edu](mailto:jajobe@ksu.edu) by the *10 of the month.*

## 4-H Council Dates for 2023-2024

**Monday, November 4, 2024; Monday, January 6, 2025; Monday, March 3, 2025; Monday, May 5, 2025; Monday, June 30, 2025; Monday, August 25, 2025 (labor Day is September 1)**

**Each club is allowed to have 5 voting representatives: 3 youth and 2 adults.**

## Importance of attending 4-H Council

Our Riley County 4-H Council serves as a vital component to our month-to-month programming here in our area, but also allows club representative to take vital information back and report to their club. 4-H Council plans and implements county-wide events, oversees funding request, and votes to make necessary changes to our program as they see fit. Each club is allowed to have (5) voting representatives (3) youth and (2) adults. I would strongly encourage you to exercise that right throughout the year. You don't have to be a Council Representative to attend. It is open to all 4-Hers and parents. The 4-H Council dates are **ABOVE**.

## 4-H Showcase Event 2025

Our 4-H Showcase event date will be February 22, 2025. Once again we will be at Riley County Grade school, with events beginning at 8:30 am and we should be done by 3:00 pm. As part of the event we will have photography, horticulture, and FACs judging. Breakfast and lunch items will be served throughout the day. Registration will open to 4-Hers in December so check back in with us. Start the planning process now for the February event. See you there!

## 2024 Riley County Foundation Grants

Are you a Riley County 4-H youth development group seeking support funds? Consider filling out a Riley County 4-H Foundation funding request application. Application must be returned to the Riley County Extension office, 110 Courthouse Plaza, Rm B220 by **5:00 pm on November 22**. Recipients will be notified after the first of the year as to the status of their request.

Applications can be found online at <http://a.cms.omniupdate.com/10/#k-state/k-state/ksre-riley/preview/4-hfoundation/index.pcf>

If your group received a grant at the beginning of 2024 you will need to fill out a grant follow-up report <http://a.cms.omniupdate.com/10/#k-state/k-state/ksre-riley/preview/4-hfoundation/index.pcf>

## State Fair Results

**If you have not already, check out the digital-entry 2024 State Fair results at**

<https://www.fairentry.com/Fair/Results/20307?hierarchyEntityToken=&sortColumn=&fourHCountyId=&exhibitorFirstOrLastName=> Congratulations to all of our exhibitors this year!

## 2024 Kansas 4-H Leadership Weekend

The Kansas 4-H Leadership Weekend will be November 23-24 at Rock Springs 4-H Ranch and consists of the Kansas Youth Leadership Forum and the Kansas Volunteer Leader Forum.

KYLF is for youth ages 14-18 before January 1, 2025 and KVF is for all Kansas 4-H Volunteers. KYLF will feature leadership workshops, Youth Council Elections, and opportunities to learn and have fun. The Kansas 4-H Volunteer Leader Forum will feature workshops and information to help volunteers be more effective and learn from each other. This Forum for adults is organized by the Kansas Association of 4-H Volunteers.

Registration will open in September. Again, this year participants in both forums will register through the same system. **Registration deadline is October 15, 2024 for both events.** There will also be an option for coming in Friday evening and having breakfast Saturday morning for those coming from a distance.

## Leaders and Parents

### Consider in October

- ◆ Make sure families enroll online by the May 1 deadline if they wish to exhibit at the Riley County Fair.
- ◆ Finalize plans for Club Achievement Celebration
- Make plans to attend 4-H Achievement Celebration (**Sunday, October 27**, 5:00 pm ; Pottorf Hall, meal provided. Please **RSVP by October 13**). A **FREE** meal will be served to all those in attendance. Registration is open.
- ◆ Install new officers & recognize new members
- ◆ Create club goals for the new year
- ◆ Have members sign up for club committees
- ◆ Select your (5) new club 4-H Council Representatives at your October meeting.
- ◆ Send club and 4-H activity photos to the Brandy [brandymarie@ksu.edu](mailto:brandymarie@ksu.edu) for use at the county-wide Achievement Celebration slideshow. **Please send them ASAP!**

### Annual 4-H Officers Training 2024

Join us on **November 12 from 6:30-8:00 pm** at Pottorf Hall in Cico Park for our annual officers training meeting. Both junior and senior officers are encouraged to join the fun for that evening. We will have a general session, then break out into training groups for President, Vice President, Secretary, Parliamentarian, Treasurer, Reporter, Rec. Leader, and Song Leader. We hope to see you there!

### Kick off the 4-H Year with Service

We hope every Extension Unit will join us this fall in seeing just how much we can give back to our communities! The weekend at the end of National 4-H Week is the perfect opportunity to set up a service project. Invite your friends, clubs, adult volunteers, and 4-H Alums too! Consider inviting some local organizations or businesses to work with your group.

When: October 12-13, 2024

Who: 4-H Members, 4-H Clubs, Friends, Adult Volunteers, Parents, 4-H Alumni

It's time to make plans for your club to participate. Register your project here: [www.Kansas4H.org/484H](http://www.Kansas4H.org/484H)

The Kansas Youth Leadership Council will recognize some of the clubs/ projects who report on their projects online by October 20.

**K-STATE**  
Research and Extension





# 4-H Garage Sale

## October 18-19

Wreath Barn, Cico Park, Manhattan

We are looking for a huge selection of items  
to be donated.

We do not accept TVs of any kind.

Proceeds benefit 4-H members in Pottawatomie, Riley,  
& Wabaunsee Counties

## Drop Off Items on Location

Wednesday, October 16, 5-8 PM

Thursday, October 17, 10 AM - 8 PM

## Garage Sale

Friday, October 18, 9 AM - 8 PM

Saturday, October 19, 9 AM - Noon

Questions: Call John Jobe, 785-537-6350

**K-STATE**  
Research and Extension



K-State Research and Extension is committed to providing equal opportunity for participation in all programs, services and activities. Program information may be available in languages other than English. Reasonable accommodations for persons with disabilities, including alternative means for communication (e.g., Braille, large print, audio tape, and American Sign Language) may be requested by contacting the event contact, John Jobe, two weeks prior to the start of the event. Requests received after this date will be honored when it is feasible to do so. Language access services, such as interpretation or translation of vital information will be provided free of charge to limited English proficient individuals upon request.

**Kansas State University Agricultural Experiment Station and Cooperative Extension Service**

K-State Research and Extension is an equal opportunity provider and employer.



# Setting 4-H Project Goals

Name: \_\_\_\_\_ Club: \_\_\_\_\_ Year: \_\_\_\_\_

Now that you have selected your 4-H projects for the year, it is important to plan out what you would like to learn and accomplish. What new skills would you like to gain? Who is going to help you along the way? Setting measurable goals will help guide you through positive 4-H project learning experiences.

## WHAT IS A GOAL?

A GOAL is . . . Deciding what you want do and learn in a 4-H project.  
A road map. It helps you get where you want to go.

Your goals should have three parts that will allow you to measure and check your progress. The three parts of a good goal, include:

1. **ACTION** — How are you going to do something.
2. **RESULT** — What are you going to do. Be specific!
3. **TIMETABLE** — When are you going to do it.

This worksheet is designed to help you set your 4-H project goals. Below are some examples of well-written goals:

| Action          | Result  | Timetable                 | Who Will Help Me            |
|-----------------|---|---------------------------|-----------------------------|
| I want to learn | about my bucket calf's nutritional needs                            | before county weigh-in.   | Dad                         |
| I want to make  | three nutritious snacks for the nursing home residents              | by our June club meeting. | my project leader           |
| I want to learn | about the aerodynamics of my rocket                                 | before the spring launch. | Mom                         |
| I want to lead  | a horse project meeting   | by February.              | my extension agent          |
| I want to keep  | accurate records of my photography project experiences and expenses | monthly.                  | my project leader & parents |

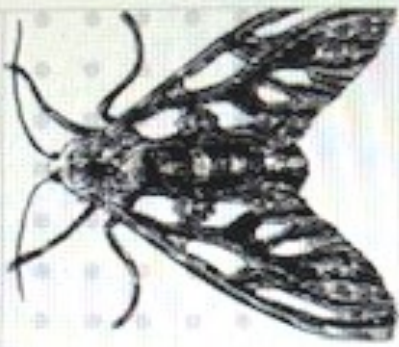
**CONTROL TEST:** Do your goals pass the control test? Do you have control over all parts of what happens? If you can answer "yes," then you are ready to begin record keeping. For example, "I want to win grand champion with my cookies at the county fair," does not pass the control test. A 4-H member doesn't have control over ribbon placing.

Now it is your turn. Practice writing three goals that you would like to accomplish this 4-H year. If you need help, ask an adult to assist.

| Action          | Result | Timetable | Who Will Help Me |
|-----------------|--------|-----------|------------------|
| I want to . . . |        |           |                  |
| I want to . . . |        |           |                  |
| I want to . . . |        |           |                  |

Time to begin. In the spaces provided on the next page, set your goals for each project you are enrolled in this year. Attach additional pages as necessary.

Please keep in mind that younger 4-H members will have fewer, less complex goals than older, more advanced 4-H members. A good rule of thumb is three to five goals per project for ages 7 to 10, four to eight goals per project for ages 11 to 13, and seven to 12 goals per project for ages 14 to 18.



# Entomology



## Project

**Sunday, Sept. 8, 5:45–7pm** – meet at Mt. Mitchell (outside Wamego) for insect collection/exploration

**Saturday, Oct. 12, 1 pm** – visit K-State Insect Museum (\$3 per person)

**Sunday, Nov. 10 – 6:30–7:30pm** – Pinning and Identification at Green Valley Community Center



*You do not have to be enrolled in entomology to attend these events!!*



**Interested? Contact Camilla at [cjroberts@ksu.edu](mailto:cjroberts@ksu.edu)**

# 2024-2025 Riley County 4-H Calendar

## October

- 1 4-H Year Begins
- 1 Online 4-H Enrollment Opens
- 2-3 Project Report Form (PRF) Screening
- 6-12 National 4-H Week
- 19-20 State Dog Conference
- 27 Achievement Celebration, Pottorf

## November

- 1 Trips/ Awards Nominations DUE
- 1 4-H Council Officer Applications DUE
- 4 4-H Council Meeting, 7 pm Pottorf Hall
- 11 Veteran's Day, Extension Office Closed
- 12 Officers Training, Pottorf Hall
- 18-19 CWF Garage Sale/ Cico Park
- 22 Riley County 4-H Grant Proposals DUE
- 23-24 KYLF
- 28-29 Thanksgiving Holiday, Ext Office Closed

## December

- 24 Half Day, Extension office
- 25 Christmas Holiday, Office Closed

## January

- 1 NYE Holiday, Ext. Office Closed
- 6 4-H Council, 7 pm Pottorf Hall
- 20 MLK Jr. Day, Extension Office Closed
- TBA NE Area PRF Screening, Pottorf Hall
- TBA Horse Panorama, Rock Springs
- TBA 4-H Showcase Pre-Entry DUE
- TBA State and Local Scholarships DUE

## February

- 15 Beef Weigh-In; Fairgrounds 1-3 pm
- 17 Presidents Day, Extension Office Closed
- TBA State Horse Judging
- TBA 4-H Ambassador Training, Rock Springs
- TBA Riley County Showcase, RCGS
- TBA Citizenship in Action, Topeka

## March

- 1 State 4-H Scholarship and State PRFs DUE
- 1 Red Wheel Sales Begin
- 3 4-H Council, 7 pm Pottorf Hall
- Late March Red Wheel Sales DUE
- TBA YQCA, 6-8 pm, Clover Room

## April

- 19 Red Wheel Pick-Up, Pottorf Hall 9-9:30 am
- TBA State Shooting Sports Match
- TBA Discovery Days Registration DUE
- TBA Fair Royalty Applications DUE

## May

- 1 Project Add/ Drop Deadline
- 5 Sheep & Goat Weigh-In/ Tagging, Hurlbert Arena, 5-7 pm
- 5 4-H Council, 7 pm Pottorf Hall
- TBA Dog Agility Workshop
- TBA Discovery Days, KSU Campus
- TBA Fair Royalty Interview; Pottorf Hall
- TBA Emerald Circle Banquet

## June

- 1 Horse ID Papers DUE
- 7 Dog Show (Disciplines TBA)
- 28 Dog Show (Disciplines TBA)
- 30 4-H Council, 7 pm Pottorf Hall
- TBA State Geology Field Trip

## July

- 1 4-H Council, 7pm Pottorf Hall
- 1 Fair Pre-Entries DUE
- 4 Independence Day, Ext Off. Closed
- 15 State Fair Livestock Entries DUE
- 17 Fair Fashion Review
- 19 4-H Horse Show
- 21 Fair Work Night, Pottorf Hall
- 22 4-H Photography Judging
- 22 4-H and Cloverbud Pet Show
- 23 4-H Visual Arts Judging
- 23 4-H and Cloverbud Foods Judging
- 24-28 Riley County Fair, Cico Park
- 29 Fairground Cleanup

## August

- 1 State Fair Entry Forms DUE
- 15 KJLS Entries DUE
- 25 4-H Council, 7 pm Pottorf Hall
- TBA State Horticulture & Livestock Judging

## September

- 1 Labor Day, Extension Office Closed
- 4 State Fair Project DUE to Extension Office
- 5-14 Kansas State Fair
- 19 Project Report Forms & Awards DUE

Updated 10/07/2024