



# RILEY COUNTY 4-H NEWSLETTER

## November 2024

### Annual 4-H Officers Training 2024

Join us on **November 12 from 6:30-8:00 pm** at Pottorf Hall in Cico Park for our annual officers training meeting. Both junior and senior officers are encouraged to join the fun for that evening. We will have a general session, then break out into training groups for President, Vice President, Secretary, Parliamentarian, Treasurer, Reporter, Rec. Leader, and Song Leader. We hope to see you there!

### 4-H Council Officer Applications

If you wish to be a 4-H Council Officer, applications are due **Friday, November 1**. For details on 4-H Council Officer responsibilities and for an application, please visit <https://www.riley.k-state.edu/4-h/forms-resources/council/index.html>

### Trips and Awards Nominations

Nominations for new 2024-2025 Trips and Award Committee members are due on **Friday, November 1**.

**Qualifications:** Any adult (leader, parents' advisory committee member, or parent) with three years exposure to the 4-H program.

**Applications can be accessed online:** <https://www.riley.k-state.edu/4-h/forms-resources/awards/index.html>

### 2024-2025 4-H Enrollment and Re-Enrollment

Enrollment and re-enrollment will open on **October 1** and will be done via [4-H Online](#). If you have forgotten your password, 4-H Online can set you up with a temporary one.

### 4-H Showcase Event 2025

Our 4-H Showcase event date will be **February 22, 2025**. Once again we will be at Riley County Grade school, with events beginning at 8:30 am and we should be done by 3:00 pm. As part of the event we will have photography, horticulture, and FACs judging. Breakfast and lunch items will be served throughout the day. Registration will open to 4-Hers in December so check back in with us. Start the planning process now for the February event. See you there!

#### How to Reach Us:

Riley County Extension  
110 Courthouse Plaza, RM B220  
Manhattan, KS 66502  
785-537-6350

John: [jajobe@ksu.edu](mailto:jajobe@ksu.edu)  
Brandy: [brandymarie@ksu.edu](mailto:brandymarie@ksu.edu)  
4-H Info: [4hinfo@rileycountyks.gov](mailto:4hinfo@rileycountyks.gov)  
Office Hours: Monday-Thursday 7:30 am -5 pm  
Friday 7:30 am - noon

#### Inside this issue:

Local Updates	1-2
Leaders/ Parents	3
Entomology	4
Calendar	5

The Riley County Extension Office will be closed **Monday, November 11** observance of Veterans Day



If you have something for the 4-H newsletter, please submit it to [jajobe@ksu.edu](mailto:jajobe@ksu.edu) by the *10 of the month*.

## 4-H Council Dates for 2023-2024

Monday, November 4, 2024; Monday, January 6, 2025; Monday, March 3, 2025; Monday, May 5, 2025; Monday, June 30, 2025; Monday, August 25, 2025 (Labor Day is September 1)

Each club is allowed to have 5 voting representatives: 3 youth and 2 adults. .

## Importance of attending 4-H Council

Our Riley County 4-H Council serves as a vital component to our month-to-month programming here in our area, but also allows club representative to take vital information back and report to their club. 4-H Council plans and implements county-wide events, oversees funding request, and votes to make necessary changes to our program as they see fit. Each club is allowed to have (5) voting representatives (3) youth and (2) adults. I would strongly encourage you to exercise that right throughout the year. You don't have to be a Council Representative to attend. It is open to all 4-Hers and parents. The 4-H Council dates are **ABOVE**.

## 4-H T-Shirts Sold at State Fair

The Kansas 4-H T-Shirts sold at the Kansas State Fair, are on online order with our business partner.

[\\*Find the flyer here\\*](#)

[\\*Order here\\*](#)

There are 2 designs this year! They can be ordered through December 1, 2024 and will be shipped before December 25, 2024. The link is up on the Kansas 4-H Website under News and Updates.

Group or club orders will be a good idea to minimize shipping fees. People who live near or travel to Manhattan can call Anndee at NZone about local pick up. Call (785) 776-3234. Thanks for supporting this 4-H Youth Leadership Council Fundraiser and showing Kansas 4-H Pride!

## Save the Date for 2025 K-State Junior Producer Days

Mark your calendar!! The 2025 K-State Junior Producer Day dates have been set for next spring. Since it is an odd year, it will be swine and meat goat. These are one-day educational events during which families learn about the selection and management of youth livestock projects. The junior day programs will be on a Saturday at the Stanley Stout Center, north of campus in Manhattan. Junior Swine Producer Day will be March 1, with Junior Meat Goat Producer Day scheduled for March 22. Stay tuned for more information, including the tentative schedule and registration details, later this month. Additional details will be released to extension agents via email, posted on the [Junior Producer Days](#) page of the youth livestock website, and via the KSU YLP Facebook page. Due to the capacity of the facility, registration will be limited for both events.

## 2024 Riley County Foundation Grants

Are you a Riley County 4-H youth development group seeking support funds? Consider filling out a Riley County 4-H Foundation funding request application. Application must be returned to the Riley County Extension office, 110 Courthouse Plaza, Rm B220 by **5:00 pm on Friday, November 22**. Recipients will be notified after the first of the year as to the status of their request.

Applications can be found online at <http://a.cms.omniupdate.com/10/#k-state/k-state/ksre-riley/preview/4-hfoundation/index.pcf>

If your group received a grant at the beginning of 2023 you will need to fill out a grant follow-up report <http://a.cms.omniupdate.com/10/#k-state/k-state/ksre-riley/preview/4-hfoundation/index.pcf>

# Leaders and Parents

## Consider in November

- ◆ Make sure families enroll/re-enroll via 4-H Online
- ◆ Install new officers & recognize new members
- ◆ Create club goals for the new year
- ◆ Have members sign up for club committees
- ◆ Talk about club holiday plans for meeting, etc.
- ◆ Financial Audit due to Extension Office ASAP!
- ◆ Encourage seniors to apply for county and state 4-H scholarships (Open in December/ January)
- ◆ Invite Mr. Jobe to a club meeting
- ◆ Start talking to families about attending the annual Showcase event (February 22 at RCGS)
- ◆ Make sure 4-H Council Reps are attending meetings as voting representatives of your club.

## Welcoming New Families

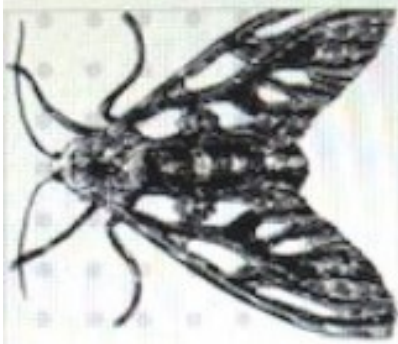
As new families come into your club, please make sure you have assigned someone to greet these families and make them feel welcome. Feeling welcome can be the difference between a family staying with the 4-H program for years to come, or dropping out after a few meetings. New Family Handbooks are available at the Extension Office to share with your new families.

## Hosting 2025 4-H Exchanges

Kansas 4-H has committed to host incoming States' 4-H exchanges in summer of 2025. Each participant will be hosted by a Kansas family for 3-4 weeks. Partner organizations and numbers we expect to host include Japan's Labo and LEX 36 youth (mostly ages 12-14) plus 4 chaperones July/August; Norway 4-H 5 youth (15-18 June/July), and Costa Rica 2 youth (15-18 June/July). Additional participants could be added if families volunteer to host. Chaperones for Norwegians and Costa Ricans will be determined later, but if families are interested in hosting an adult, they are encouraged to apply. Families who host a youth are expected to have a host sibling of the same gender and within 2 years of the visitor's age.

[Applications are online](#) and may be accessed now by going to [www.kansas4-H.org](http://www.kansas4-H.org) and clicking on the link under "News and Updates" on the homepage.

We will be in contact when information on individuals coming to Kansas is available in the spring.



# Entomology



## Project

**Sunday, Sept. 8, 5:45-7pm** – meet at Mt. Mitchell (outside Wamego) for insect collection/exploration

**Saturday, Oct. 12, 1 pm** – visit K-State Insect Museum (\$3 per person)

**Sunday, Nov. 10 – 6:30-7:30pm** – Pinning and Identification at Green Valley Community Center



*You do not have to be enrolled in entomology to attend these events!!*



**Interested? Contact Camilla at [cjroberts@ksu.edu](mailto:cjroberts@ksu.edu)**

# 2024-2025 Riley County 4-H Calendar

## November

- 1 Trips/ Awards Nominations DUE
- 1 4-H Council Officer Applications DUE  
4-H Council Meeting, 7 pm Pottorf Hall
- 10 Entomology Project Workshop
- 11 Veteran's Day, Extension Office Closed
- 12 Officers Training, Pottorf Hall
- 19 Leathercraft Workshop, Pottorf
- 22 Riley County 4-H Grant Proposals DUE
- 23-24 KYLF
- 28-29 Thanksgiving Holiday, Ext Office Closed

## December

- 24 Half Day, Extension office
- 25 Christmas Holiday, Office Closed

## January

- 1 NYE Holiday, Ext. Office Closed
- 6 4-H Council, 7 pm Pottorf Hall
- 9 NE Area PRF Screening, Pottorf Hall
- 20 MLK Jr. Day, Extension Office Closed
- TBA Horse Panorama, Rock Springs
- TBA 4-H Showcase Pre-Entry DUE
- TBA State and Local Scholarships DUE

## February

- 17 Presidents Day, Extension Office Closed
- 22 Riley County Showcase, RCGS
- TBA Beef Weigh-In; Fairgrounds 1-3 pm
- TBA State Horse Judging
- TBA 4-H Ambassador Training, Rock Springs
- TBA Citizenship in Action, Topeka

## March

- State 4-H Scholarship and State PRFs DUE
- 1 Red Wheel Sales Begin
- 3 4-H Council, 7 pm Pottorf Hal
- Late March Red Wheel Sales DUE
- TBA YQCA, 6-8 pm, Clover Room

## April

- 19 Red Wheel Pick-Up, Pottorf Hall 9-9:30 am
- TBA State Shooting Sports Match
- TBA Discovery Days Registration DUE
- TBA Fair Royalty Applications DUE

## May

- 1 Project Add/ Drop Deadline
- 5 Sheep & Goat Weigh-In/ Tagging,  
Hurlburt Arena, 5-7 pm
- 5 4-H Council, 7 pm Pottorf Hall
- TBA Discovery Days, KSU Campus
- TBA Fair Royalty Interview; Pottorf Hall
- TBA Emerald Circle Banquet

## June

- 1 Horse ID Papers DUE
- 7 Dog Show (Disciplines TBA)
- 28 Dog Show (Disciplines TBA)
- 30 4-H Council, 7 pm Pottorf Hall
- TBA State Geology Field Trip

## July

- 1 Fair Pre-Entries DUE
- 4 Independence Day, Ext Off. Closed
- 15 State Fair Livestock Entries DUE
- 17 Fair Fashion Review
- 19 4-H Horse Show
- 21 Fair Work Night, Pottorf Hall
- 22 4-H Photography Judging
- 22 4-H and Cloverbud Pet Show
- 23 4-H Visual Arts Judging
- 23 4-H and Cloverbud Foods Judging
- 24-28 Riley County Fair, Cico Park
- 29 Fairground Cleanup

## August

- 1 State Fair Entry Forms DUE
- 15 KJLS Entries DUE
- 25 4-H Council, 7 pm Pottorf Hall
- TBA State Horticulture & Livestock Judging

## September

- 1 Labor Day, Extension Office Closed
- 4 State Fair Project DUE to Extension Office
- 5-14 Kansas State Fair
- 19 Project Report Forms & Awards DUE

Updated 10/7/2024